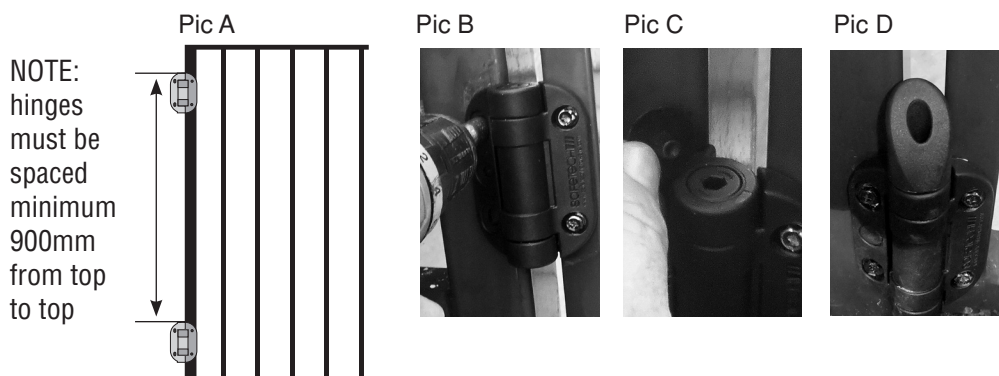


SAFEKLIK AND MEGAKLIK HINGES EASY INSTALLATION

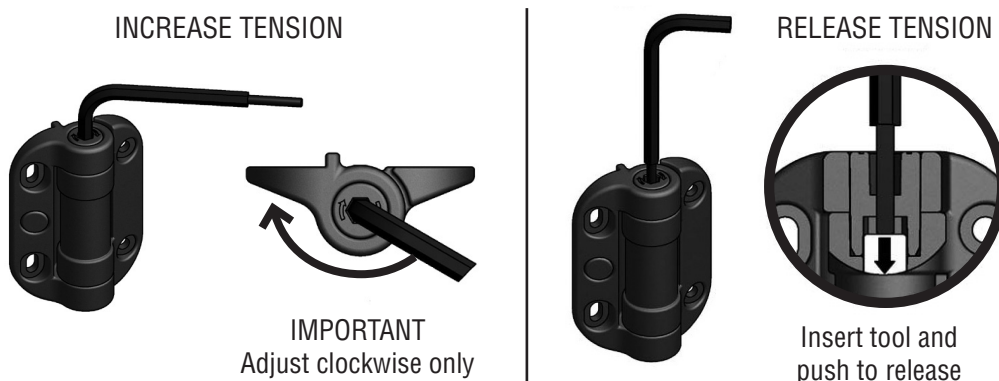
Before installing a pool gate, check with your local Council regarding specific pool fence requirements.

NOTE: INSTALLATION IS THE SAME FOR MEGAKLIK AND SAFEKLIK HINGES.

**MEGAKLIK HINGES ARE NOT POOL COMPLIANT ALL REFERENCES TO COMPLIANCY RELATE TO SAFEKLIK HINGES
DO NOT USE MEGAKLIK FOR POOL GATES**



Adjustment diagrams



1. Mark and fix hinges to gate. Distance between top of hinges must be minimum of 900mm (Pic. A), if this isn't possible Hinge Cone (supplied) must be fitted to the bottom hinge for pool compliance (applicable to Safeklik only) (Pic. D).
2. Align gate with hinge post and fix hinges to post (Pic B)
3. To Adjust hinge tension, simply use supplied tool (see adjustment diagrams).
 - ONE tension click per hinge at a time
 - check for desired gate tension after each adjustment.
 - Aim for equal amounts of tension clicks on each hinge if possible
 - Maximum FOUR tension clicks per hinge.
 - Once adjusted fit the supplied covers to the top of the hinges (Pic C).
4. Safety cone reduces the risk of children using the hinge as a foothold to climb over the gate. Must be fitted to the bottom hinge if the top of the hinges are less than 900mm apart (Pic D).